



Facultatieve Technologies

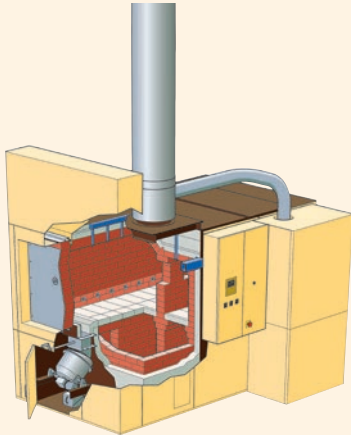
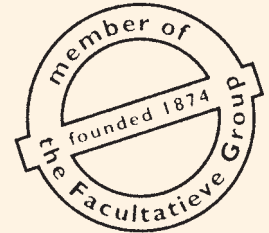
Cremation & Incineration Equipment



Incinerator Specialists Inc.

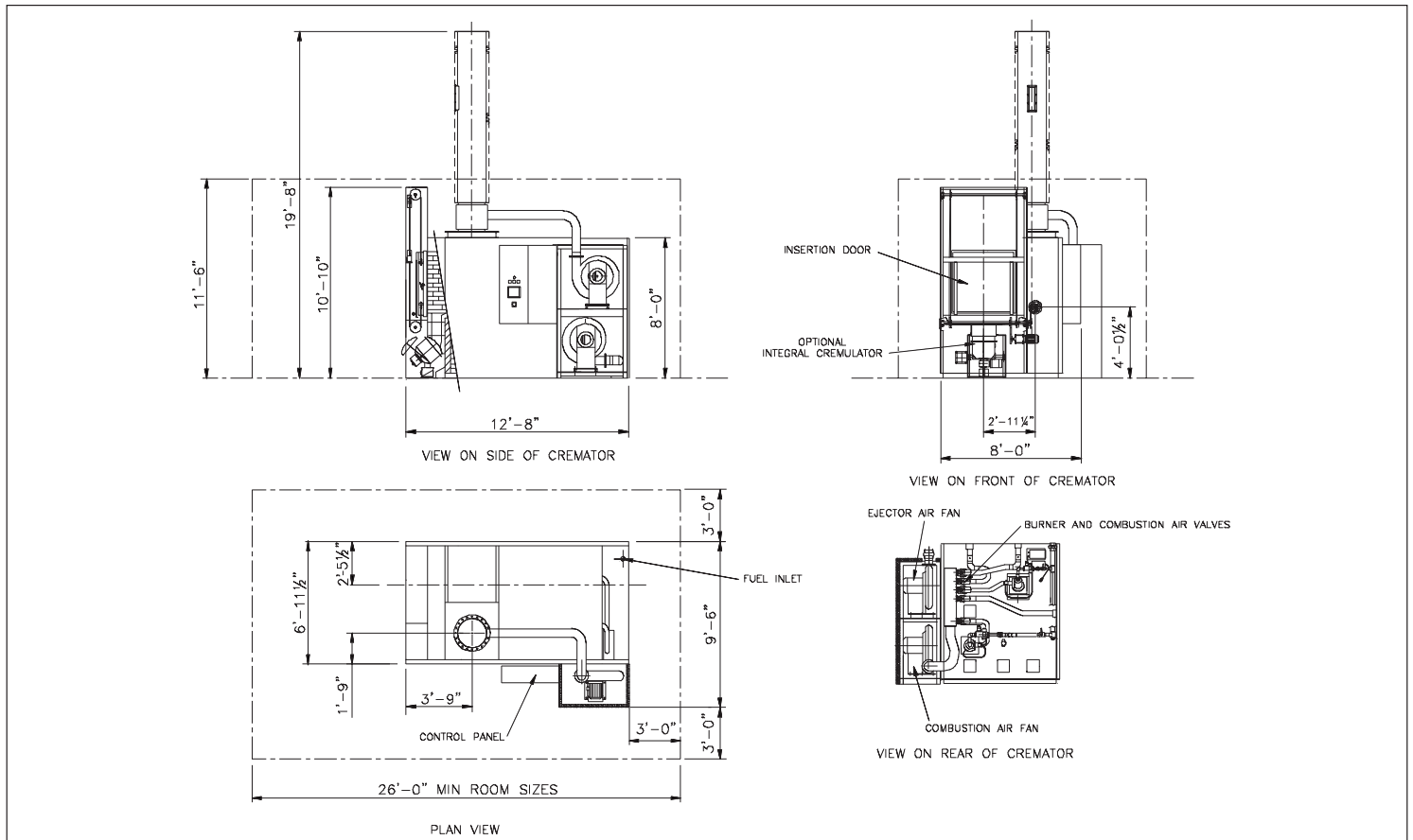
**Technical
Information**

FT II - CREMATOR



- ✓ **Compact and quiet**
- ✓ **High capacity**
- ✓ **Fully automatic**
- ✓ **Modem link for on-line maintenance analysis and fault-finding**
- ✓ **Integrated ash cremulator (optional)**
- ✓ **Excellent environmental performance**
- ✓ **Low maintenance, with easy access to components**
- ✓ **Best price, high quality**

Please refer to technical drawing for further details



FT II CREMATOR

Specifications

Height	10'-10"
Width	6'-11 1/2"
Length	12'-8"
Weight	12 1/2 Tons
Fuel	Natural Gas / LPG
Opening for installation	8'-9" wide x 8'-9" high

Electrical Characteristics

Combustion air fan	1200 cu.ft/min at 68°F, 5.5 kW
Ejector air fan	1200 cu.ft/min at 68°F, 5.5 kW
Control System	1.5 kW

Electrical Supply	50 Amps (Motor rated) 3 x 400 Volts + neutral + earth - 60Hz
-------------------	---

Fuel Consumption

Burner Ratings	
Primary Burner	853,00 Btu/hr
Secondary Burner	1,023,640 Btu/hr

Natural Gas usage typically	12 cu.ft/min at 8" Water gauge (excludes pre-heating of cremator)
-----------------------------	--

LPG usage on request
 Also available in double end format

Non-contractual document. Facultatieve Technologies reserves the right to modify its products in order to make technical improvements.

06/05-FTII-USA

List of offices of Facultatieve Technologies

Head Office

Van Stolkweg 29a
 P.O. Box 80532
 2508 GM The Hague, The Netherlands
 Phone: +31 (0) 70 351 88 88
 Fax: +31 (0) 70 351 88 27
 info@facultatieve-technologies.com

The Americas

734 N. Progress Dr., Medina
 OH 44256, U.S.A.
 Phone: +1 330 723 63 39 /
 +1 888 883 28 76
 Fax: +1 330 723 58 41
 info.usa@facultatieve-technologies.com

China

149 Qiaosong Rd, Sujiatun District
 110101 Shenyang
 Phone: +86 248 981 90 85
 Fax: +86 248 981 90 85
 info@facultatieve-technologies.com

Czech Republic

Tylova 4
 772 00 Olomouc
 Tel.: +420 58 522 69 26
 Fax: +420 58 522 78 42
 info@facultatieve-technologies.com

France

Savipol 290/a
 10302 Sainte Savine
 Tél.: +33 (0) 325 49 55 00
 Fax: +33 (0) 325 49 54 49
 info@facultatieve-technologies.fr

Germany

Hemmerlestrasse 4
 D-87700 Memmingen
 Tel.: +49 (0) 8331 92 73 330
 Fax: +49 (0) 8331 92 73 335
 info@facultatieve-technologies.de

The Netherlands

Van Stolkweg 29a
 Postbus 80532
 2508 GM Den Haag
 Tel.: +31 (0) 70 351 88 88
 Fax: +31 (0) 70 351 88 91
 info@facultatieve-technologies.nl

United Kingdom

Moor Road
 Leeds LS10 2DD
 Phone: +44 (0) 113 276 88 88
 Fax: +44 (0) 113 271 81 88
 info@facultatieve-technologies.co.uk

www.facultatieve-technologies.com

Facultatieve Technologies is a member of 'the Facultatieve Group'.