



Facultatieve Technologies

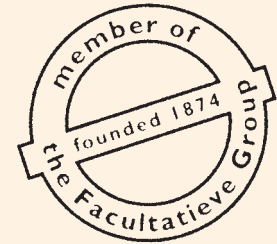
Cremation & Incineration Equipment



Incinerator Specialists Inc.

**Technical
Information**

Human Cremation System

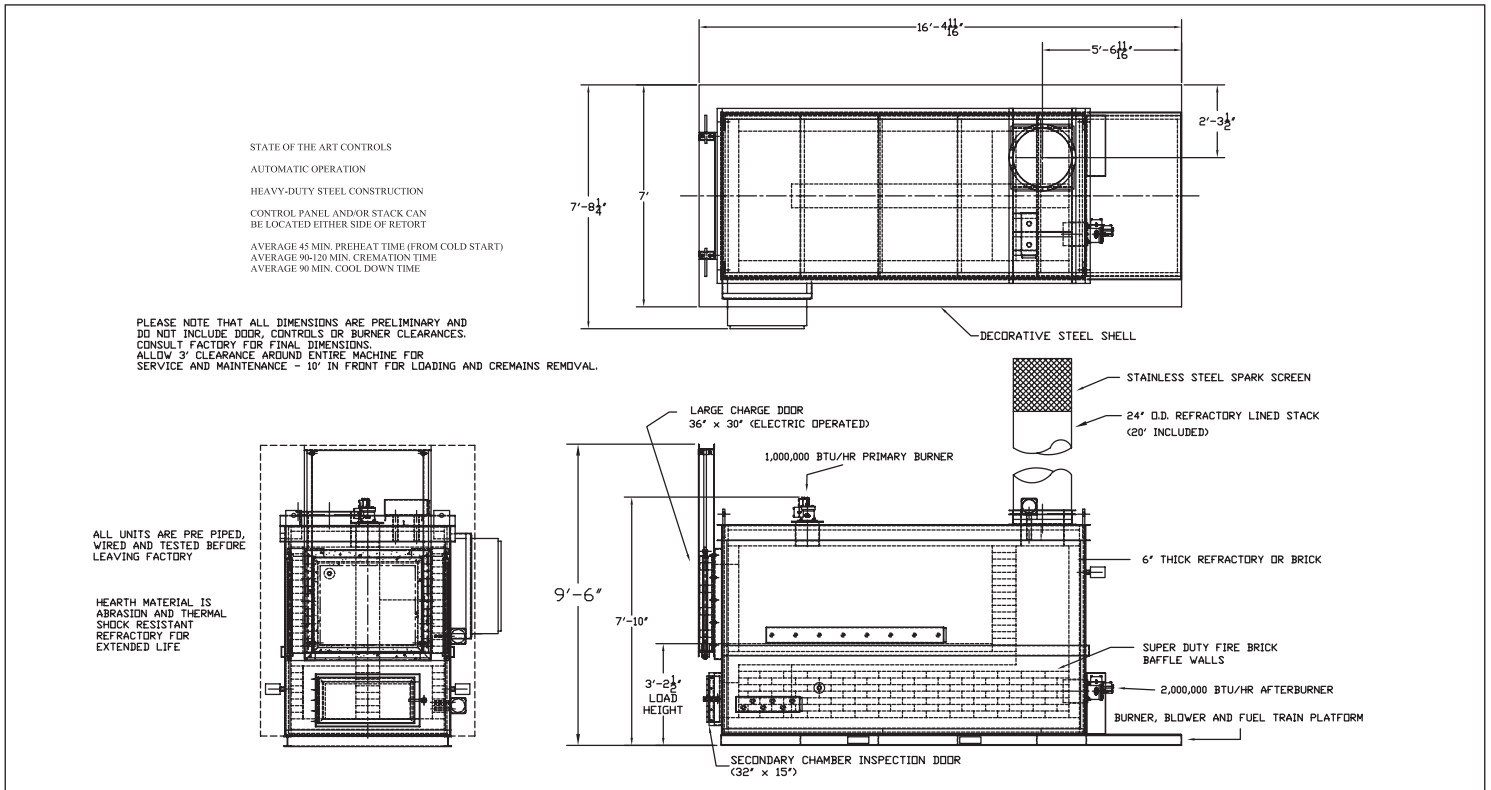


Using state-of-the-art technology for controls and combustion chambers, ISI crematory systems are designed to give you years of reliable, automated operation. Built and installed by experienced master craftsmen.

ISI-H2 FEATURES

- ✓ Large 36"x30" electrically operated load door
- ✓ Heavy duty steel construction
- ✓ Large burning chamber (primary chamber volume +74 ft³)
- ✓ 3000°f refractory lining
- ✓ Easily accessible second chamber
- ✓ Solid hot hearth design with 2 piece construction for easy replacement
- ✓ Reliable burners
- ✓ Primary burner - 1,000,000 btu/hr each
- ✓ EPA Compliance
- ✓ Standard decorative cover panels
- ✓ Single pen temperature recorder
- ✓ One second retention afterburner - 2,000,000 btu/hr
- ✓ Simple automatic controls
- ✓ Burns efficiently and cleanly
- ✓ Refractory lined stack min.ht. 12 ft.
- ✓ Control panel can be located either side
- ✓ Easy to service and maintain
- ✓ Electric - 220 V, 60 Hz, 1 Ph. (consult factory for other options)
- ✓ Fuel - natural gas or propane
- ✓ **ONE-YEAR WARRANTY**
- ✓ Digital readout temperature controllers

Please refer to technical drawing for further details



ISI-H2 HUMAN CREMATORY

Specifications

Height	10' - 0"
Width	7' - 8"
Length	16' - 5"
Weight	33,000 lbs (incl. stack)
Fuel	Natural gas or propane
Charge opening	36" W x 30" H

Electrical characteristics

Combustion Air Blower	5-hp, Radial blade
Electrical supply	220 V, 1 PH, 60 Hz, 60 Amp. Service (standard)

Fuel Consumption

Burner ratings	
Primary burner	1,000,000 btu/h max
Secondary burner	2 mbtu/h max

Natural Gas usage typically 1,500 cf/h

COMPLETE SUPPORT SERVICES

- **EPA COMPLIANCE**
Full assistance in achieving and maintaining complete EPA compliance.
- **TRAINING**
Maintenance manuals, supervised testing and on-site training for your personnel by our field experts.
- **SERVICE & MAINTENANCE**
ISI is one of the leading providers of incinerator service worldwide for all makes and models.
- **PARTS**
ISI high quality replacement parts for all brands meet or exceed OEM performance.

11/05-HCS-USA

List of offices of Facultatieve Technologies

Head Office

Van Stolkweg 29a
P.O. Box 80532
2508 GM The Hague, The Netherlands
Phone: +31 (0) 70 351 88 88
Fax: +31 (0) 70 351 88 27
info@facultatieve-technologies.com

China

149 Qiaosong Rd, Sujiatun District
110101 Shenyang
Phone: +86 248 981 90 85
Fax: +86 248 981 90 85
info@facultatieve-technologies.com

France

Savipol 290/a
10302 Sainte Savine
Tel: +33 (0) 325 49 55 00
Fax: +33 (0) 325 49 54 49
info@facultatieve-technologies.fr

The Netherlands

Van Stolkweg 29a
Postbus 80532
2508 GM Den Haag
Tel: +31 (0) 70 351 88 88
Fax: +31 (0) 70 351 88 91
info@facultatieve-technologies.nl

The Americas

734 N. Progress Dr., Medina
OH 44256, U.S.A.
Phone: +1 330 723 63 39 /
+1 888 883 28 76
Fax: +1 330 723 58 41
info.usa@facultatieve-technologies.com

Czech Republic

Tylova 4
772 00 Olomouc
Tel: +420 58 522 69 26
Fax: +420 58 522 78 42
info@facultatieve-technologies.com

Germany

Hemmerlestrasse 4
D-87700 Memmingen
Tel: +49 (0) 8331 92 73 330
Fax: +49 (0) 8331 92 73 335
info@facultatieve-technologies.de

United Kingdom

Moor Road
Leeds LS10 2DD
Phone: +44 (0) 113 276 88 88
Fax: +44 (0) 113 271 81 88
info@facultatieve-technologies.co.uk